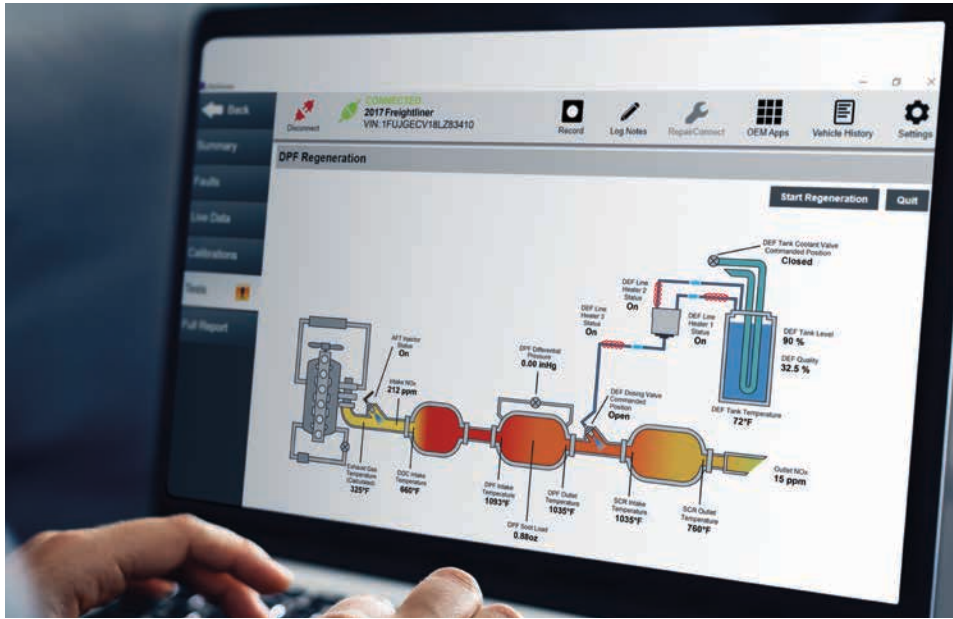


Real-time diagnostics at your fingertips



BI-DIRECTIONAL SUPPORT



CLOUD-BASED
VEHICLE HISTORY

eTechnician™ 2.1 gives you the data and the support required to stay competitive in today's trucking industry. Heavy-duty diagnostics on your PC was never this good—until now. We've combined extensive coverage for everything from commercial vehicles right down to light and medium-duty trucks. That gives you diagnostic capability for engines, transmission, brakes, body and chassis, and more. And we've added cloud-based, fleet-wide vehicle history to give you access to data for every diagnostic session for every vehicle in your fleet, regardless of location.

COMPREHENSIVE COVERAGE

Engines

- Cummins®
- Detroit Diesel®
- Caterpillar®
- International®
- Navistar® MaxxForce®
- Hino®
- Volvo®/Mack®
- PACCAR®
- Light and Medium Truck (LMT)

Transmissions

- Allison®

Brakes

- Bendix®
- Eaton®
- Wabash®
- WABCO®
- Haldex®

BI-DIRECTIONAL SUPPORT

- DPF Regen
- Injector Cutout
- Power Balance Test
- VGT Install and Calibrate
- High Pressure Fuel System Leak Test
- Fuel Injector Performance Test
- SCR Performance/System Test
- Aftertreatment Reset
- Scans all the electronic modules on the vehicle (HDS)
- Create custom parameter lists (HDS)
- View engine, brakes, and transmission data (LMT)

**Just a sample of the thousands of special tests available with eTechnician 2.1.*

CLOUD-BASED VEHICLE HISTORY REPORTS

- Special Test Results
- Component Details
- Technician's Notes
- Recordings
- Life/Trip Data

LMT VEHICLE COVERAGE

eTechnician LMT provides support for a wide array of light and medium-duty trucks.

Navistar® CV Truck

- 6.6L Duramax—L5D (2019)
- Allison Transmission® (faults only)
- Body Control Module
- Chassis
- Glow Plug
- Instrument Cluster
- PTO

Workhorse™

- 3.9L (2004–2005)
- 4.3L (1999–2005)
- 4.8L (2004–2012)
- 5.0L (1999–2000)
- 5.7L (1999–2004)
- 6.0L (2003–2012)
- 6.5L Diesel (1999–2005)
- 6.5L Turbo Diesel (1999–2002)
- 6.6L Duramax (2005–2006)
- 7.4L (1999–2000)
- 8.1L (2001–2012)

Isuzu® Engines

- 6.0L (2005–2019)
- 5.2L (2005–2019)
- 3.0L (2011–2018)

Isuzu® Brakes and Transmissions (2005–2019)

- NPR/NF3
- NQR/NRR
- FTR

Dodge®/RAM® Engines

- 6.7L Cummins® (2007–2019)*
- 5.9L Cummins® (2006–2007)
- 5.7L HEMI (2006–2019)*
- 6.4L HEMI (2014–2019)*
- 3.6L V-6 VVT (2006–2019)

*Tests not available for these models for years 2018–2019

Dodge®/RAM® Brakes, Transmissions, and Body Control Module (BCM)

- RAM® 1500–5500 (2006–2019)

GM® Engines

- 3.0L (2019)
- 4.3L (2000 and 2014–2019)
- 4.8L (2011–2019)
- 5.2L Duramax® (2004–2009 and 2017–2019)
- 5.3L (2014–2019)
- 6.0L (1999–2019)
- 6.2L (2017–2019)
- 6.6L Duramax® (2001–2019)
- 7.8L Duramax® (2004–2009)
- 8.1L (2001–2009)

GM® Brakes and Transmissions (2001–2019)

- C1500–C7500
- K1500–K3500
- T4500–T7500
- P Chassis
- W4 Chassis
- Workhorse

Ford® Engines

- 3.2L PowerStroke (2015–2019)
- 3.5L (2011–2019)
- 3.7L (2011–2019)
- 4.2L (2000–2008)
- 4.6L (2000–2016)
- 5.0L (2011–2019)
- 5.4L (2000–2016)
- 6.0L PowerStroke (2003–2010)
- 6.2L (2010–2019)
- 6.4L PowerStroke (2008–2010)
- 6.7L PowerStroke (2011–2019)
- 6.8L (2000–2016)
- 7.3L PowerStroke (2000–2003)

Ford® Brakes and Transmissions (2000–2019)

- E250–E450
- F250–F750

LMT DIAGNOSTIC TESTS: A PARTIAL LISTING

Ford Vehicles

- Engine Tests
 - Power Balance Test
 - KOEO Tests
 - KOER Tests
 - Relative Compression
 - Injector Buzz Test
 - Fuel Lift Pump Relay
 - DPF Regen
- Transmission Tests
- ABS Tests

GM Vehicles

- Engine Tests
 - Injector Cutout
 - DPF Tests
 - DEF Tests
 - Transmission Tests
 - ABS Tests
- ### ISUZU Vehicles
- Engine Tests
 - Transmission Tests
 - ABS Tests

Dodge/RAM Vehicles

- Engine Tests
 - Cylinder Cutout
 - Cummins Engine
 - DPF Test
 - DEF
 - VGT Calibration
 - Program Injector Codes
 - Stationary De-soot (DPF Regen)
- Transmission Tests
- ABS Tests

A complete list of supported tests and calibrations for the eTechnician LMT application is available for download at www.nexiq.com/Document/Detail/156

eTECHNICIAN 2.0 LICENSING AND MINIMUM PC REQUIREMENTS

- Subscription (1 year)
- Registered at time of use
- Internet availability
- 4 GB RAM
- 500 MB Free Hard Drive Space
- i5 Processor (or equivalent)
- 1 available USB port
- 1280 x 768 monitor resolution

Disclaimer: Product specifications and data are subject to change without notice to improve functionality, reliability, design, or otherwise. Availability of tests and configurable parameters is dependent on both the vehicle concerned and the module loaded.



For more information, please contact NEXIQ Technologies at 800-639-6774, or online at www.nexiq.com.
To learn more about the eTechnician™ 2.1 diagnostic solution, please visit: <https://www.nexiq.com/Product/Detail/859000>